

## MATHS

The Angel of the North is a famous landmark close to us, which represents the North East of England. Research eight other landmarks from around the world and find their distances from Durham. Put these in ascending order.

## DESIGN & TECHNOLOGY

In the painting 'Tobias and the Angel' an important symbol is the fish. Design your own fish and use collage to add texture and colour. You could use material, paper or any other material to produce the overlapping design of fish scales.

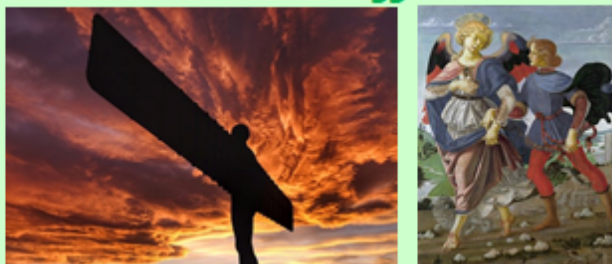
## ART & DESIGN

In the background of the painting is a castle. Research a castle from the United Kingdom then sketch it. You can add labels if you wish.

## History

Verrocchio painted Tobias and the Angel in the Italian Renaissance. Research 3 other artists from this time & tell me two facts about each.

## Deer Class – Summer 1 Take Off!



As part of our topic, we would like you to help your child to get involved at home.

The children can choose which order to complete the suggested activities in; they may even come up with some of their own ideas!

Children need to complete one piece of homework per week. On the Friday of that week, children will be given time to **share their homework with a homework partner.**

Creations/work is to be returned each Thursday (02/05, 9/05, 16/05 and 23/05).

We cannot wait to see what you come up with and we will continue to display your work in class, for everybody to see.

Enjoy,  
Mr Glenton and Mrs Webb

## ENGLISH

Tobias was on a journey to save his father. What other stories do you know which have a journey? Rewrite one of these in your own words over at least three paragraphs..

## Geography

Landmarks are important sites which can represent a culture or country. Look at landmarks from around the world. Plot some of these onto a map and tell me one fact about each one.

## RE

Angels feature a great deal in Christianity. The most important angels were called archangels. Find information about one of the archangels & present this information on a computer-made poster.

## PSHCE

When the Angel of the North was built, some people objected to it whilst others were happy for this monument to represent the North East of England. Do you think this monument was a good idea? Explain your thoughts in three paragraphs.